

The goal of the DAG is to develop comprehensive, equitable, integrated and visionary high school campus designs with authentic school community engagement. Members will be expected to serve for several months throughout the planning process.



MADISON HIGH SCHOOL MASTER PLAN

Portland Public Schools | Opsi + Dao

MHS MASTER PLAN UPDATE



DESIGN ADVISORY GROUP 02

AGENDA

Welcome

Schedule

Budget

Concept Preview

Group Activity

Commons / Classrooms

Report Back

Public Comments

Next Steps



VISION STATEMENT



The new Madison High School will be a welcoming, safe and secure place that builds upon the diversity and resiliency of everyone in the Madison community – students, parents, teachers and neighbors alike.

In the 21st Century, teaching and learning happens everywhere. As such, the new Madison will serve as a rigorous and engaging learning atmosphere that helps students embrace the future and solve real world problems, utilizing flexibility, creativity and the strength of a diverse community.



GUIDING PRINCIPLES

The MPC studied national trends in 21st century school design and married those trends with their own understanding of the particular needs and goals for the Madison community. The resulting principles formed the basis for the Master Plan concept designs:

Create State-of-the-Art 21st century learning environments

Transform the school's facilities to stimulate learning.

Community Connections

Make the school the heart of the Neighborhood.

Social and Academic Connections

Create a reflection of the neighborhood spirit and diversity inside Madison HS.

Indoor / Outdoor Connections

Create stronger connections between the school's interior and its outdoor courtyards and gardens.

Example of Sustainability

Connect the new facility to nature and environmental systems. Inspire students and the community to embrace sustainable behavior.

Access and Security

Create safe and convenient access points for students on foot, bike, bus, and cars.

Improve connectivity within the building

Create visual landmarks and open sightlines and improve access and flow.

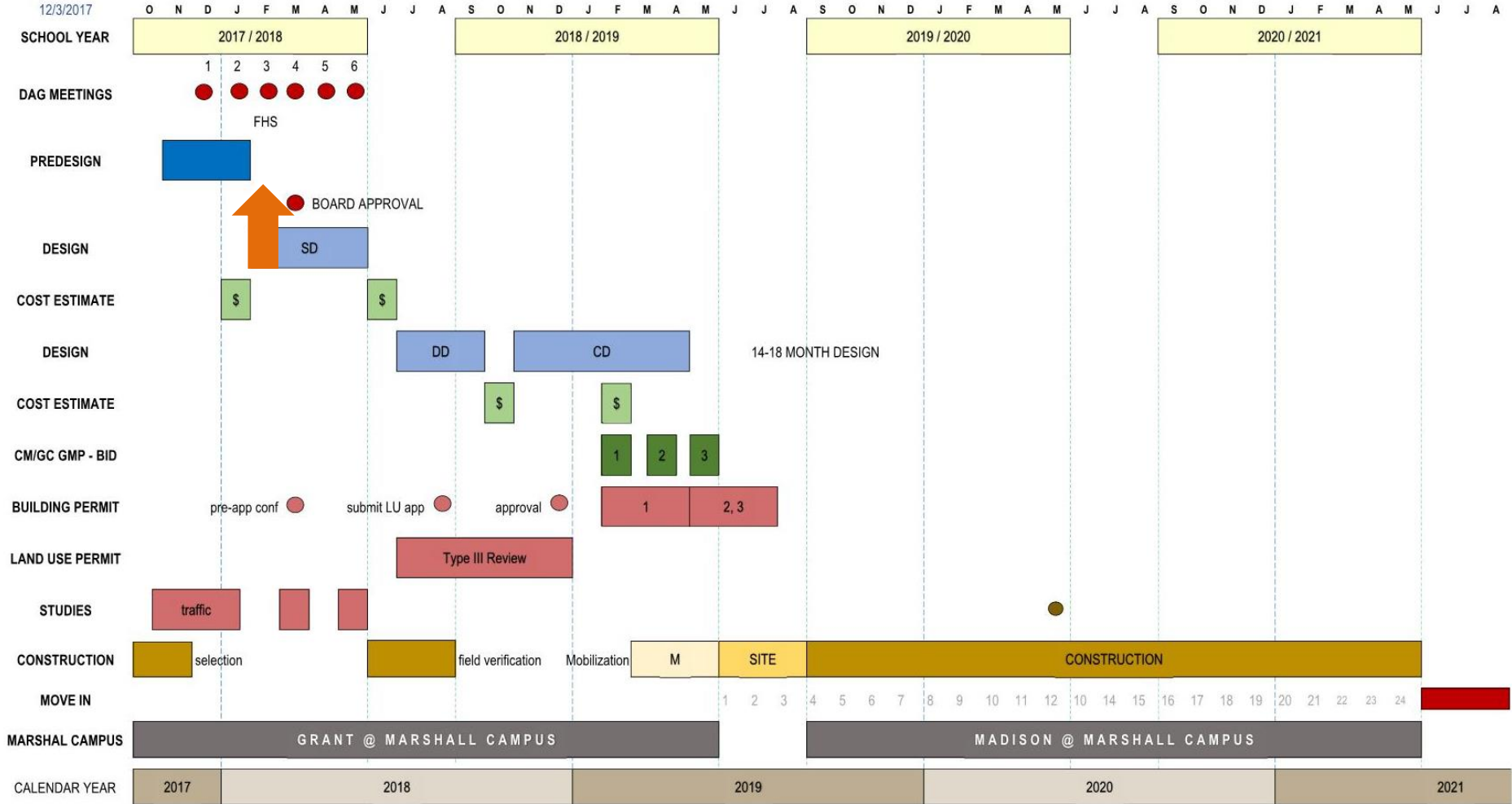
Optimize the Site's Environment

Address the school's topography while enhancing its use of solar access and adjacent amenities and views.

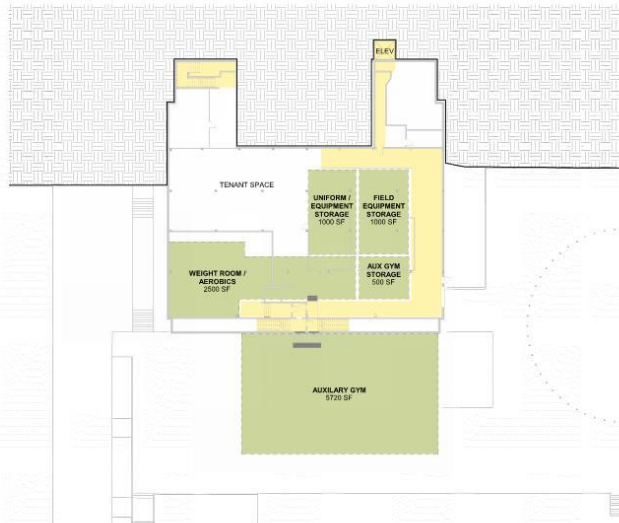
Enhance the Building's Systems

Modernize the school's structural, mechanical, electrical, and technology systems.

SCHEDULE



PROGRAM PLANS – LOWEST LEVELS (B1, B2)

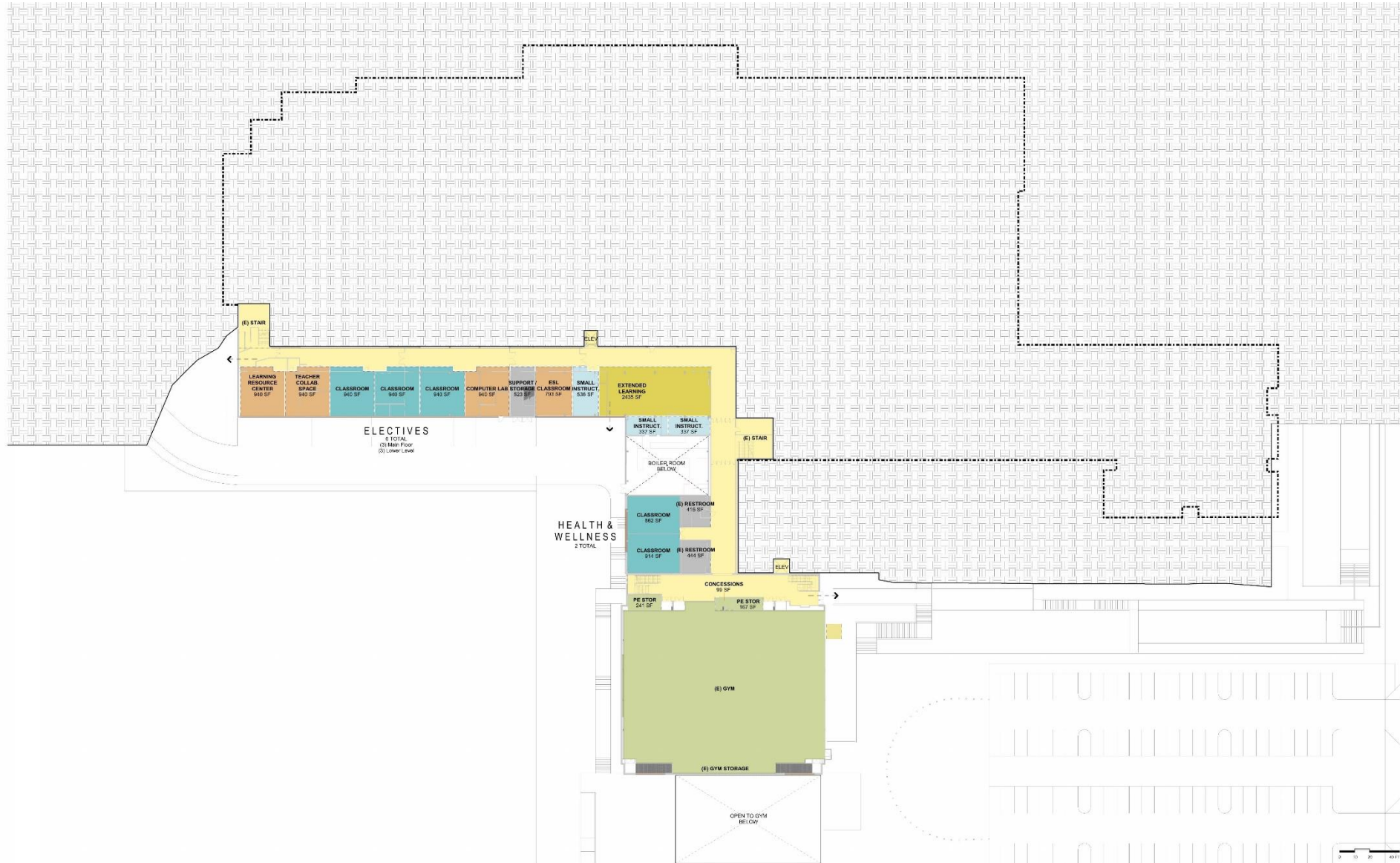


2 | Floor Plan - Basement 2



1 | Floor Plan - Basement 1

PROGRAM PLANS – LOWER LEVEL



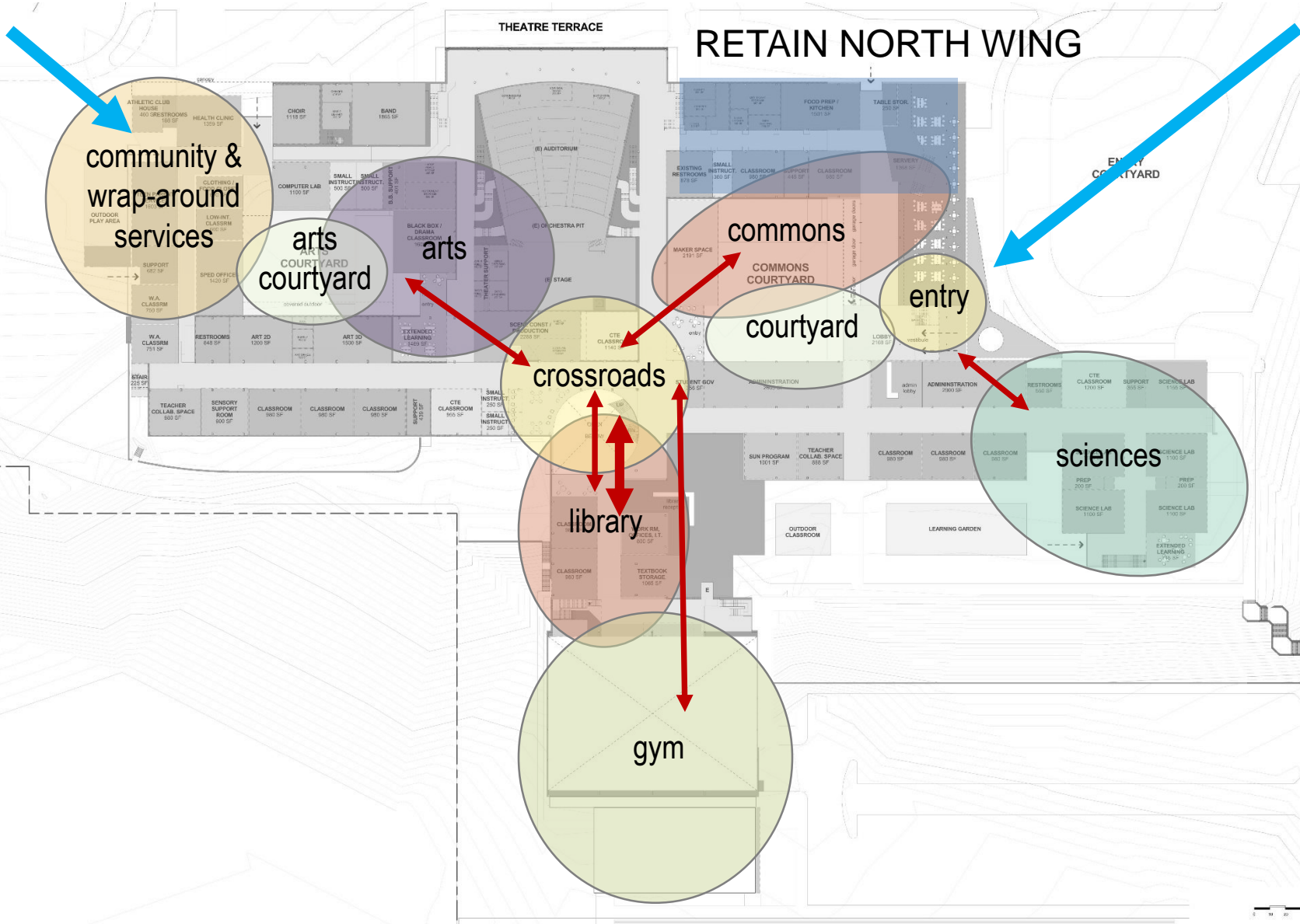
PROGRAM PLANS – MAIN LEVEL



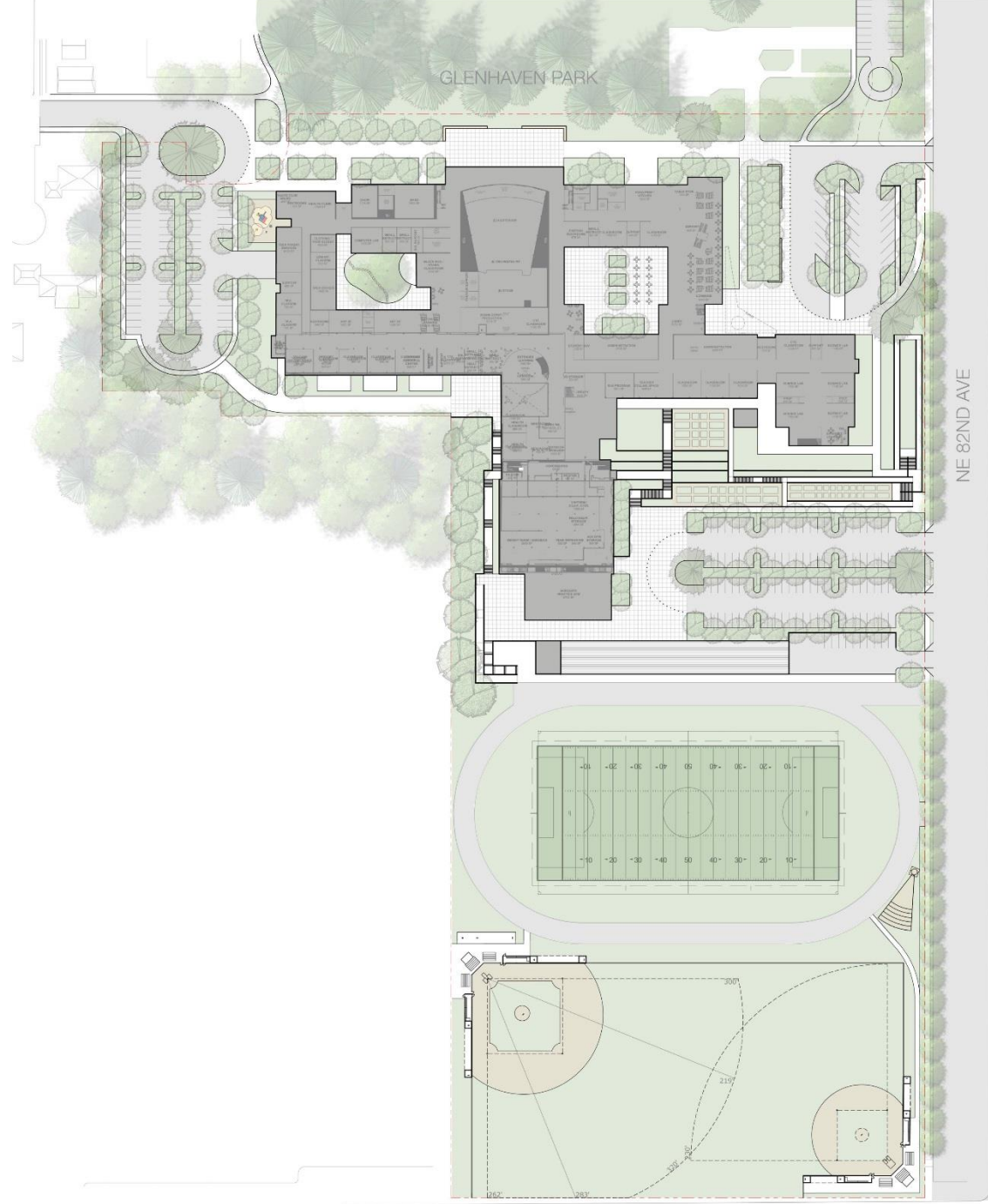
PROGRAM PLANS – UPPER LEVEL



PROGRAM RELATIONSHIPS



SITE PLAN



CONCEPT DESIGN PREVIEW

Digital Fly-through the 3D model.
Open Comments and questions.

LEARNING SPACE INTERACTIVE

COMMONS / CROSSROADS & CLASSROOMS / EXTENDED LEARNING

For this exercise we want to explore two key areas of the Design to imagine the possibilities and opportunities these spaces can bring to a new Madison.

COMMONS / CROSSROADS

- What makes a successful Commons – Light, Space, Materials...
- What Community Uses can the Commons support
- What Issues might a Commons have – Noise, security, crowding...



CLASSROOMS / EXTENDED LEARNING

- What makes a successful Classroom – Flexibility, Supports Group work, Natural Light, Technology...
- How can Extended Learning Spaces be used for Classroom Break-outs - observation / control
- Who, When, How can Extended Learning spaces be used



DAG NEXT STEPS

DAG Meeting 3

Optional Meeting

DAG Meeting 4

DAG Meeting 5

DAG Meeting 6

February 26

February TBD

March 19

April 16

May 14

Franklin HS Tour

Roosevelt HS Tour

Design Options

Preferred Option

Review Schematic Design

